

PROPOSAL FOR
COMMUNITY FARMS
IN
THE CITY OF NORTH VANCOUVER

KEVIN CONNERY, DIRECTOR
EcoUrbia Network

Community Farms in the CNV – June 21 2010



OUTLINE

- Who is the EcoUrbia Network
- What are we proposing
- Urban agriculture & urban farms
- Westview & Larson Rd community farms
- CNVs role
- Next Steps

Community Farms in the CNV – June 21 2010



EcoUrbia Network

WHO ARE WE

A not-for-profit, North Shore based organization, focused on community initiatives that will bring social, environmental, and economic benefits to our community.

WHAT DO WE DO

- Promote 'zero waste' initiatives on the North Shore
- Aspire to build & operate urban/community farms, and create local green jobs supported by a strong volunteer base.
- Develop learning programs related to organic farming, urban agriculture, food security, community, resiliency, and sustainability to residents of the North Shore

Community Farms in the CNV – June 21 2010



Westview Site



Larson Park Site

What are we proposing?

TWO FARMS

1. Westview Community Farm
2. Larson Road Community Farm

- Operated by professional farmer(s)
- EcoUrbia provides oversight using a triple bottom line business model (economic, social and environmental benefits)

Community Farms in the CNV – June 21 2010



Previous Urban Farm Activities



- EcoUrbia Network was actively involved in envisioning the Loutet Park Urban Farm project
- Loutet Farm is focusing on research under the management of UBC
- EcoUrbia's interest lies in developing economically viable working farms on vacant urban land that provide multiple community benefits.

Community Farms in the CNV – June 21 2010



Mole Hill Gardens Vancouver BC



Mill Creek Urban Farm, Philadelphia PA

Urban Agriculture

Includes all agricultural activity in the city:

- Allotment gardens
- Backyard and school yard gardens
- Orchards and Berry patches
- Container gardens
- Edible gardens (culinary and medical)
- Rooftop gardens
- Beehives and chickens

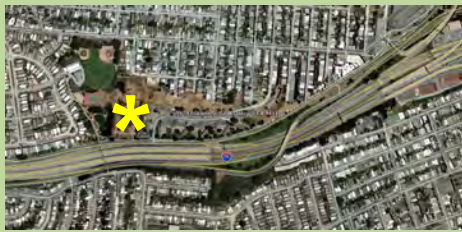
Urban Farms

A focused component of urban agriculture:

- Full-time farmer operation
- Food production orientation
- Economically viable
- Grow produce for farmers market/ community
- Educational and training mission

Community Farms in the CNV – June 21 2010





URBAN FARM PRECEDENT #1

ALEMANY FARM San Francisco CA

- 1.8 hectare working organic farm in San Francisco beside I-280
- Collaboratively managed by volunteers, San Francisco City & Alemany community residents
- grow organic food and green jobs for low-income communities
- 4000lbs/1800kg of fresh produce/yr
- Workshops and educational programs



Community Farms in the CNV – June 21 2010



URBAN FARM PRECEDENT #2

RED HOOK FARM Brooklyn NY

- 1.1 hectare working farm
- Operated by ADDED VALUE, a non-profit organization that promotes sustainable development
- 12 tons/11,000kgs of fresh produce for donation & sale
- Serves as the primary platform for youth empowerment programs & Farm Based Learning work.
- Twice weekly farmers market



Community Farms in the CNV – June 21 2010





EcoUrbia's Proposed Farm Sites

WESTVIEW @
24TH STREET

LARSON ROAD

Community Farms in the CNV – June 21 2010



WESTVIEW COMMUNITY FARM

Location:

- Westview Dr & 24th St.

Current Condition:

- Open fields with two walkways.
- Formerly residential land.
- Southern Aspect
- Steep Slopes
- Invasive exotic plants.

Gross Farmable Area:

- 1.5 acres/0.6 hectares

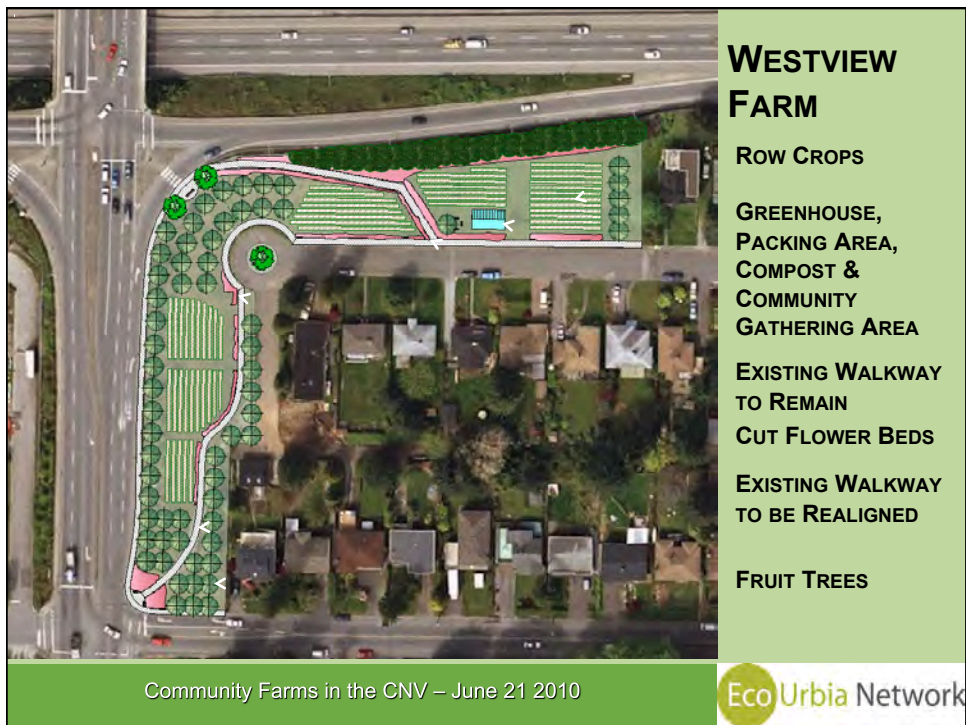
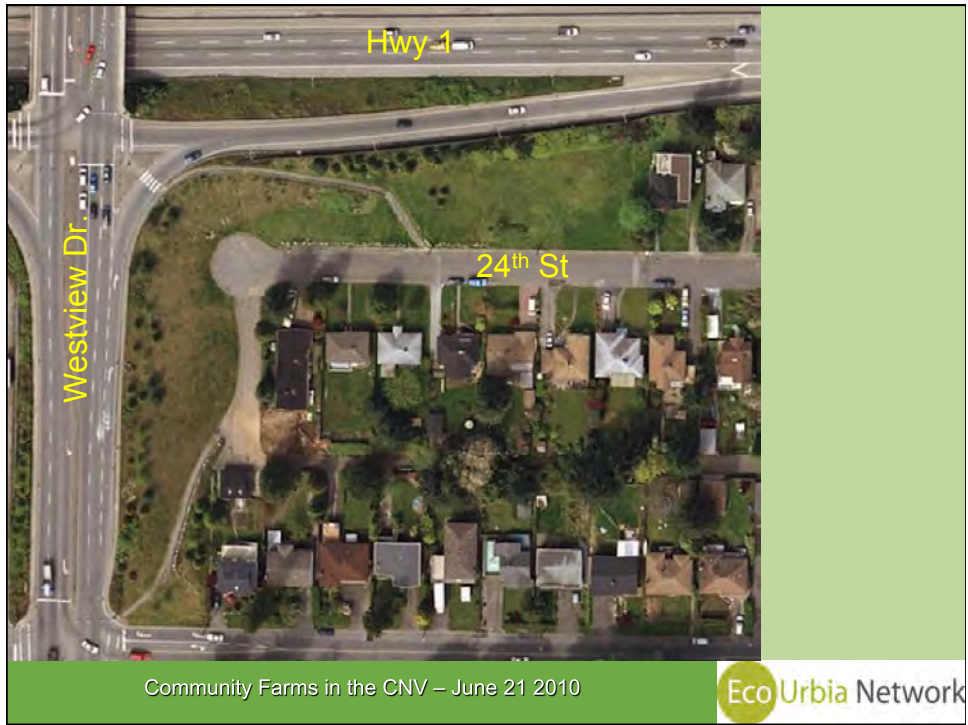
Net Farmable Areas:

- 1.2 acres/0.5 hectares



Community Farms in the CNV – June 21 2010







LARSON ROAD COMMUNITY FARM

Location:
Larson Park

Current Condition:

- Neighbourhood park
- Primarily lawn
- Newly heritage rhododendrons southern edge
- Adjacent to Carson Graham School

Gross Farmable Areas:

- 0.4 acres/0.16 ha

Net Farmable Areas:

- 0.3 acres/0.12 ha

Community Farms in the CNV – June 21 2010

EcoUrbia Network



Community Farms in the CNV – June 21 2010

EcoUrbia Network



LARSON RD FARM

- FRUIT TREES
- EXISTING WALKWAY TO REMAIN
- CUT FLOWER BEDS
- ROW CROPS
- TOOL SHED, COMPOST AREA, & COMMUNITY GATHERING AREA

Community Farms in the CNV – June 21 2010



SPIN (Small Plot INTensive) Farming



SPIN Farming

What is SPIN?

- Meet SPIN Farmers
- Use SPIN Suppliers
- Be a SPIN Farmer
- Meet SPIN's Cousins
- SPIN FSC's
- SPIN Photo Gallery
- SPIN Media Coverage
- Spread the Word!
- Contact Us

GOODBYE LAWN... HELLO SPIN FARM!

Watch a 3 minute video of how SPIN Farming can lead to creating a profitable urban farm in Philadelphia, PA.

SPIN
Cultivating

Turn your garden into a significant food source with SPIN Gardening™

SPREAD THE WORD

- Franchise-like business structure & support
- Geared toward generating significant income from farming small areas (eg less than 1 ha) \$25-30/m²
- Easily applicable to small areas of vacant urban land
- NOT capital intensive – doesn't require much expensive equipment
- Provides a five day work flow structure with a peak season of 50 hours/week

Community Farms in the CNV – June 21 2010





SPIN Example: Somerton Tanks Farm

- Philadelphia, PA
- Partnership between the Oley Institute and the Philadelphia Water Department
- 0.5 acre (0.2 ha) in size
- Annual sales >\$68,000
- 290 beds mostly in 3 crop rotations per season
- 2 ½ to 4 people full time per 9 month growing season

Community Farms in the CNV – June 21 2010



Projected Financial Performance

REVENUE

Westview Community Farm 5000m2@\$28/m2	\$140,000
Larson Road Community Farm 1200m2 @\$28/m2	\$33,600
Total Gross Revenue	\$173,000

EXPENSES

1 full time farmers	\$50,000
3 seasonal workers	\$70,000
Operating Expenses	\$20,000
Education Programs & Farm Reinvestment	\$18,000
Contingency	\$15,000
Total expenses	\$173,000

Community Farms in the CNV – June 21 2010



EcoUrbia's Future Work

- MoT Approval
- CNV Approval
- Community Consultation
- Comprehensive Site assessment
- Secure funding

CNVs Role

- Land Lease for Larson Park
- Water/sewer supply for Westview Community Farm
- Water supply for Larson Community Farm
- Provide letter of support

We are seeking:

1. Support in principle for EcoUrbia's Community Farm proposals
2. Support for EcoUrbia moving forward with a community consultation process to determine neighbourhood attitudes towards community farms in these locations
3. City support for a lease of appropriate land and provision of relevant infrastructure (e.g. water and sewer) in support of these farms should the neighbourhood support the community farms